



CTS Flanged Pipe Spool

Designed, engineered and manufactured by CTS HVAC-R, Flanged spools are manufactured using stainless steel pipe with integral floating flanges.



CTS HVAC-R now offer another innovative pipe line solution. The CTS Flanged Pipe Spool is designed for convenient connection of components in HVAC and civil water piping systems, negating costly onsite fabrication.

- ▶ **Manufactured to suit your length requirements**
- ▶ **Prefabricated by CTS complete with floating flange connections:**
 - Reduces the need for costly site assembly
 - Compact installation for limited spaces
 - Easy pipe connection alignment
- ▶ **High strength stainless steel one-piece pipe (316 grade):**
 - Seamless pipe, no welds
 - Light weight, corrosion resistant
 - No need for expensive stainless flanges
- ▶ **Available in WaterMark pipe**
 - All sizes are also available in WaterMark seam pipe
- ▶ **Multiple end connections available:**
 - Integral flanges for all pipe specifications
 - Combination of flange ends
 - Roll grooved ends available



Available from your local CTS supplier
ctsvalve.com



CTS Flanged Pipe Spool Specification Data

Technical Details:

Pressure Range	To specified flange rating
Temperature Range	-20°C to 120°C (-4°F to 248°F)
End Connections	AS Table D/E, ANSI 150/300, DIN 10/16
Size Range	65 - 200mm (2 1/2" - 8") larger sizes upon request
Stainless SCH 10	ASTM A312 TP316/316L pipe (WaterMark seam pipe if requested)
Flanges	Powder Coated Steel with EPDM insulator

Dimensional Details:

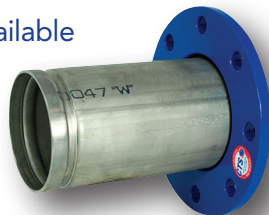
Pipe NB mm (inches)	Standard 'Face to Face' Spool Length mm (inches)
65mm (2 1/2")	150mm (6")
80mm (3")	150mm (6")
100mm (4")	175mm (7")
125mm (5")	175mm (7")
150mm (6")	175mm (7")
200mm (8")	175mm (7")

Threaded Sockets

Integral threaded sockets can be supplied for pressure gauges, thermowelds and drains.

Also available in Roll Grooved End Spool

Flanged to roll grooved ends available to suit your piping specification.



Available from your local CTS supplier
ctsvalve.com

Specification data is correct as at time of printing.