

## Black Steel Forged Screwed Flange **Table H**

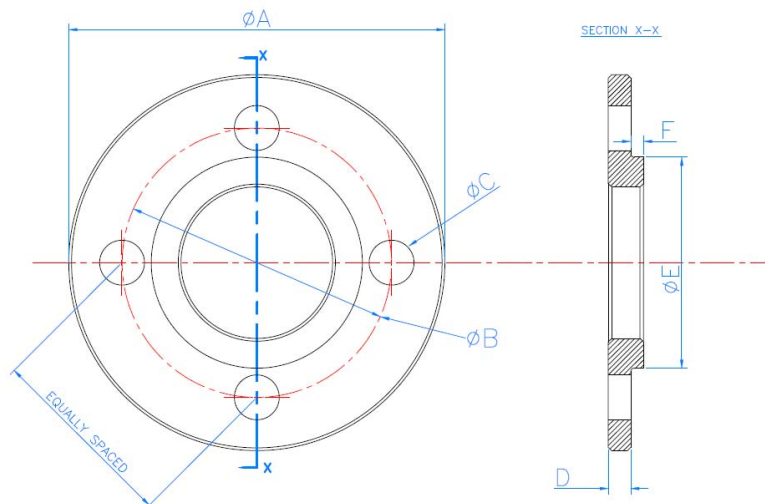
<u>SIZE</u> (mm)	<u>CODE</u>	<u>WORKING PRESSURE</u> kPa (Atmospheric)	<u>Max Hydrostatic</u> <u>Test Pressure</u>	<u>Material</u>
15	STH015FS	3,500	5,250	15
20	STH020FS	3,500	5,250	20
25	STH025FS	3,500	5,250	25
32	STH032FS	3,500	5,250	32
40	STH040FS	3,500	5,250	40
50	STH050FS	3,500	5,250	50
65	STH065FS	3,500	5,250	65
80	STH080FS	3,500	5,250	80
100	STH100FS	3,500	5,250	100
125	STH125FS	3,500	5,250	125
150	STH150FS	3,500	5,250	150
200	STH200FS	3,500	5,250	200

\*In accordance with AS2129

### Flange Dimensions

<u>SIZE</u> (mm)	<u>Number of</u> <u>Holes</u>	<u>Flange</u> <u>Diameter</u> (mm) <b>A</b>	<u>Pitch Circle</u> <u>Diameter</u> (mm) <b>B</b>	<u>Bolt Hole</u> <u>Diameter</u> (mm) <b>C</b>	<u>Flange</u> <u>Thickness</u> (mm) <b>D</b>	<u>Raised Face</u> <u>Diameter</u> (mm) <b>E</b>	<u>Raised Face</u> <u>Height</u> (mm) <b>F</b>
20	4	115	83	18	13	48	11
25	4	120	87	18	14	52	11
32	4	135	98	18	17	64	11
40	4	140	105	18	17	70	13
50	4	165	127	18	19	93	13
65	8	185	146	18	19	112	16
80	8	205	165	18	22	130	16
100	8	230	191	18	25	152	19

- CTS Copper Capillary Socket Fittings manufactured in accordance with AS 3688
- Adapters meet requirements of a maximum operating pressure of 1.4MPa where working temperature does not exceed 95°C
- Electrolysis Insulator made from EDPM rubber to prevent contact from Steel Backing Flange and Copper Adapter



For Commercial, Institutional or Industrial Applications